



ESI[Truck] HD Diagnostics

Unmatched Coverage  
& Repair Information



**BOSCH**  
Invented for life

# ESI[Truck] Coverage and Repair Information

## Increase Shop Efficiency

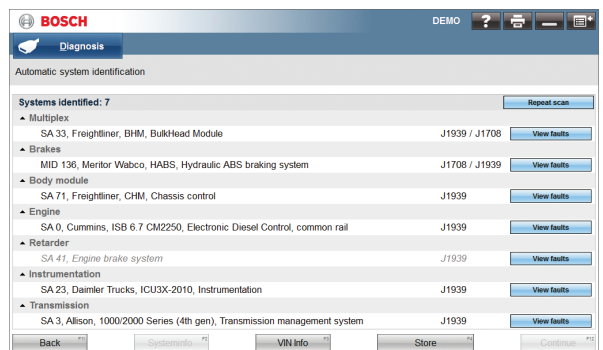
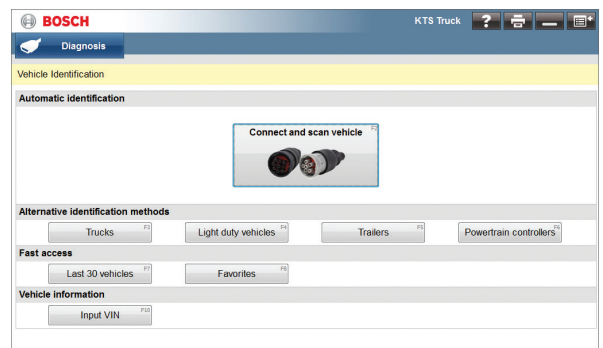
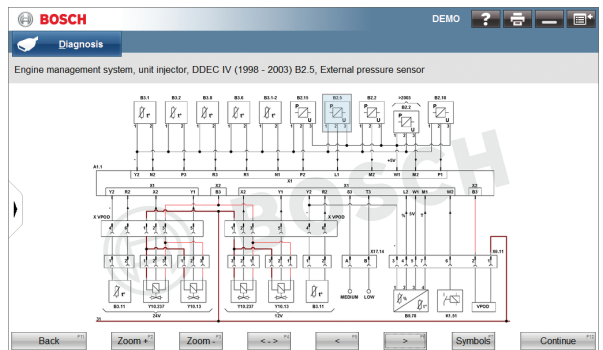
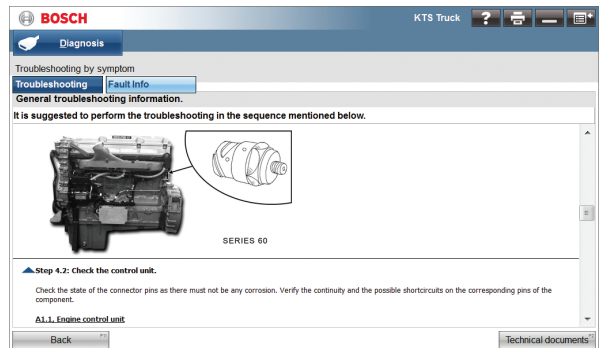
- ▶ Fault code report for entire truck
- ▶ Key system test
- ▶ Repair Info at the truck
  - Wiring Diagrams
  - Component Pictures & Locations
  - Test Procedures & Descriptions
  - DTC Look-up
- ▶ Automatic Vehicle ID

## Single, Intuitive Interface

- ▶ Work on all trucks with a common scan tool
- ▶ Intuitive, easy to use



Bluetooth wireless capability.



## Functions Mechanics Need

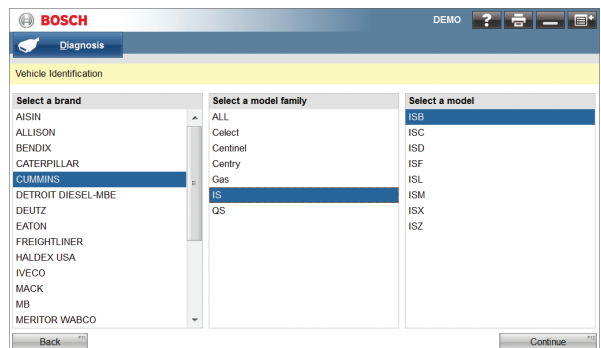
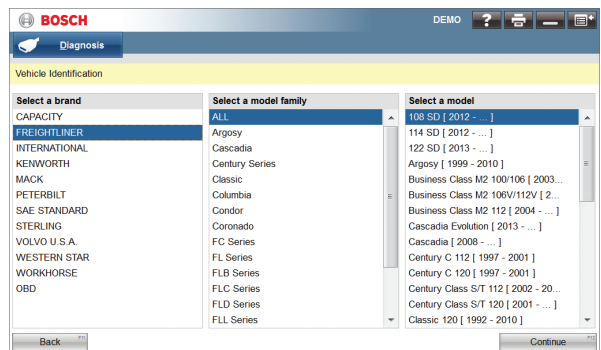
- ▶ Read & clear fault codes
- ▶ Cylinder cut-out
- ▶ Cylinder compression/balance
- ▶ Injector actuations
- ▶ Key component actuations
- ▶ Key system tests

READ FAULTS - Engine management system, unit injector, DDEC IV (1998 - 2003)

FAULT(S) STORED IN MEMORY:7			
FAULT CODE	FAULT DESCRIPTION	FAULT STATUS	COUNTER
SID:52 FMI:3	Driver device 4 auxiliary output. Current too high or short circuit caused by overvoltage.	ACTIVE FAULT	1
PID:91 FMI:4	Pedal position sensor. Current too low or short circuit caused by undervoltage.	ACTIVE FAULT	1
PID:100 FMI:4	Engine oil pressure. Current too low or short circuit caused by undervoltage.	ACTIVE FAULT	1
SID:250 FMI:12	Data linking SAE J1708 (J1587). Control unit or component defective.	INACTIVE FAULT	20
PID:111 FMI:3	Coolant level. Current too high or short circuit caused by overvoltage.	ACTIVE FAULT	1
SID:51 FMI:3	Driver device 3 auxiliary output. Current too high or short circuit caused by overvoltage.	ACTIVE FAULT	1
PID:102 FMI:4	Charge air pressure. Current too low or short circuit caused by undervoltage.	ACTIVE FAULT	1

## Works with Other Software

- ▶ RP1210 VCI
- ▶ Compatible with industry software including most OEM's



## Best Aftermarket Coverage

- ▶ Truck Brands  
Freightliner, International, Kenworth, Mack, Volvo, Peterbilt, Sterling, Western Star
- ▶ Engine Brands  
Cummins, Caterpillar, Detroit Diesel-MBE, Volvo Mack, Navistar, PACCAR, Perkins, Deutz, MTU
- ▶ Brake Systems
- ▶ Transmissions
- ▶ Trailer ABS
- ▶ In-Depth Heavy Duty, Medium Duty
- ▶ Light Duty basic

## NEW FOR 2016

Troubleshooting Repair Service

- ▶ +13,000 code fixes
- ▶ Step-by-step diagnose and repair



# ESI[Truck] Ordering Information

## Bosch ESI[truck] 3824

- ▶ Includes ruggedized 10" tablet
- ▶ RP1210 Data Link Adapter
- ▶ 6 Pin, 9 Pin, and 16 Pin Connectors
- ▶ ESI[truck] Diagnostics Software
- ▶ External DVD Drive
- ▶ One year warranty



## Bosch ESI[truck] 3824BSC

- ▶ RP1210 Data Link Adapter
- ▶ 6 Pin, 9 Pin, and 16 Pin Connectors
- ▶ ESI[truck] Diagnostics Software
- ▶ One year warranty



## Bosch ESI[truck] Trailer Adapter 3824-06

### 7-pin PLC adapter for trailer ABS diagnostics

- ▶ J2497 Power Line Carrier (PLC) communication compatible
- ▶ Allows direct connection to trailer
- ▶ Works with tractor present or without the tractor present
  - External power supply is necessary without tractor
- ▶ Bosch ESI[truck] trailer ABS coverage for Bendix, Haldex, Meritor Wabco and Wabash systems



## Bosch ESI[truck] License Renewal 3824-08

- ▶ 12-Month Security Card



## Bosch ESI[truck] Repair Information Subscription 3824-08R

- ▶ Fixes for +13,000 trouble codes
- ▶ Fixes for engine symptoms



**BOSCH**  
Invented for life

Learn More at [www.boschdiagnostics.com](http://www.boschdiagnostics.com)  
Customer Service/Order Entry: 1-800-321-4889